

This manual is for reference and historical purposes, all rights reserved.

This creation is copyright© by M. Butkus, NJ, U.S.A.

These creations may not be sold or distributed without the expressed permission of the producer

I have no connection with any camera company

On-line camera manual library

If you find this manual useful, how about a donation of \$2 to:

M. Butkus, 29 Lake Ave., High Bridge, NJ 08829-1701

and send your e-mail address so I can thank you.

Most other places would charge you \$7.50 for a electronic copy or

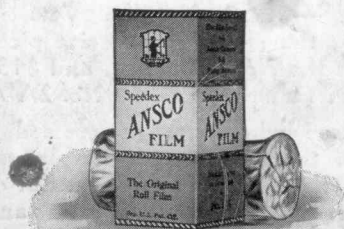
\$18.00 for a hard to read Xerox copy.

This will allow me to continue this site, buy new manuals and pay their shipping costs.

It'll make you feel better, won't it?

If you use Pay Pal, go to my web site

www.orphancameras.com and choose the secure PayPal donation icon.

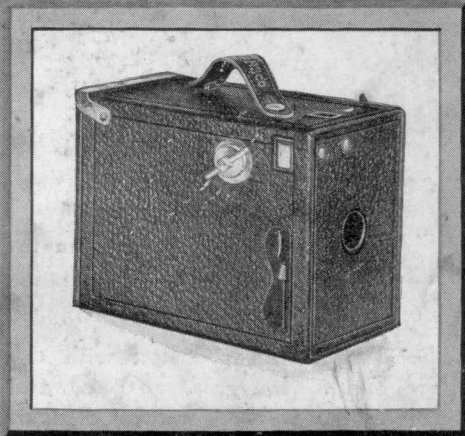


PRINTED IN U. S. A.

JOHNSON CITY PUBLISHING CO., JOHNSON CITY, N. Y.

9-26-20

How to Operate ANSCO Box Cameras Nos. 2 and 2A



ANSCO PHOTOPRODUCTS, INC. BINGHAMTON, N.Y.



Use Ansco Speedex Film

Size 4A for No. 2 Ansco Box Camera.

Sizes 6A and 6B for No. 2A.

(6A, 6 exposures; 6B, 12 exposures)

The film in the red box with the yellow band. Its greater speed and latitude make it the film for clearer, better pictures.

How to Operate Ansco Box Cameras Nos. 2 and 2A

Ansco Box Cameras

ANSCO Box Cameras are very carefully and substantially made of selected materials, and are not only attractive in appearance but exceptionally convenient. It is very easy to get clear, sharp pictures with an Ansco Box Camera, and the method of operation in all details from loading to taking the picture is simple and easily understood. Mistakes and failures can hardly occur unless the following clear instructions have been neglected. This is important. In the use of any camera it should be kept in mind that, however simple it is, instructions must be followed, as the user is dealing with materials which must be properly handled to protect against failure.

Protect the Film

IN THE use of any camera, always bear in mind that roll-film is a sensitive material and can be absolutely ruined if exposed to light in any direction except through the lens of the camera. The roll of film as you buy it is protected by a continuous strip of outside paper. This has sufficient length beyond the point at which the film itself is attached

HOW TO OPERATE

to provide a leader for loading and unloading in open daylight. If, however, the roll is unwound too far before insertion in the camera, or if it is turned over to the finisher in a loosely wound condition, there is danger that light may get in under the protective paper and fog the film. Just a little light will do this, as can easily be seen from the fact that only a flash of light through the lens at the time of taking the picture is necessary to produce a complete image.

AnSCO Box Cameras are so constructed that loading and unloading are actually safer than with box cameras of other types, as particular attention has been given to making the operation simple and free from danger of a fumble in handling the film. Compare the inner cone construction with the cumbersome arrangement in other cameras and the striking advantage of AnSCO Box Cameras will be readily apparent.

The following instructions begin with opening the camera and proceed through the natural series of operations involved in loading with film, taking the pictures, and removing the film afterwards for finishing.

Daylight Loading

ANSCO Box Cameras are daylight loading. This means that they can be loaded practically anywhere except in the open sunshine, which should always be avoided when putting in or taking out the

ANSCO BOX CAMERAS

film. If it is not convenient to load the camera in the house or on the verandah, step under the shade of a tree or into the shade of a doorway, or if out in the open turn so as to shade the operation with your own body. The point is to avoid if possible the intensity of unobstructed sunlight.

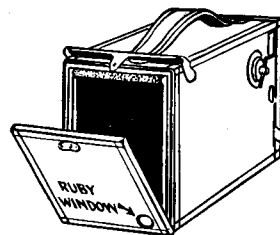


Illustration One

Opening the Camera

THE No. 2 and No. 2A AnSCO Box Cameras are of different size but otherwise identical. The back is hinged at the bottom and held at the top when closed by the clasp as shown in Illustration 1. The inner cone construction is the same on both cameras, and the same instructions apply to loading and other points of operation.

In order to load the camera, first open the back as above illustrated.

HOW TO OPERATE

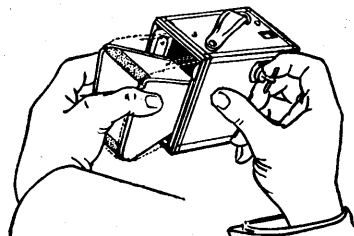


Illustration Two

Removing the Cone

NOW remove the cone as in Illustration 2. This is done by holding the camera as shown, pulling out the winding key so that it no longer engages slot in end of film spool. As you remove the cone, note the position, so that you will quickly see which side comes up when it is returned to the camera after loading. A glance at Illustration 7 will afford a check on this point. The point to keep in mind is that when the cone is returned to the camera freshly loaded it will be the slot in the empty spool which will engage with the winding key.

The Film to Use

THE No. 2 Ansco Box Camera takes pictures $2\frac{1}{4} \times 3\frac{1}{4}$ inches, and in it may be used roll-film of any reputable make. We strongly recommend 4A Ansco Film. The

ANSCO BOX CAMERAS

No. 2A Ansco Box Camera takes pictures $2\frac{1}{2} \times 4\frac{1}{4}$ inches, and likewise uses roll-film of any reputable make. We recommend 6A and 6B Ansco. 6A gives 6 pictures per roll, 6B 12 pictures per roll.

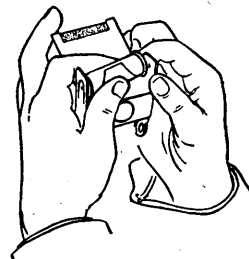


Illustration Three

Loaded

INSERT fresh spool of film as in Illustration 3, being careful to get it right end around so that paper will roll with the orange side out. Draw paper across back of cone as in Illustration 4, noting that it rolls with orange side out, and thread paper into slot in empty spool as in Illustration 5, giving a few turns to bind it. See that the spool has slotted end towards cup with hole in center

HOW TO OPERATE

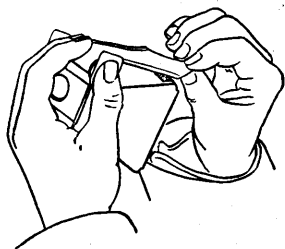


Illustration Four

which receives winding key, and that paper winds with orange side out.

Now grasp spool firmly with thumb and forefinger of left hand, as in Illustration 6, and insert as shown, first pressing gently towards tension tongue at left, then dropping other end of spool into cup. See that spool fits completely into cup.

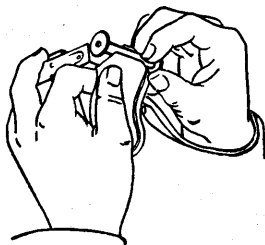


Illustration Five

ANSCO BOX CAMERAS

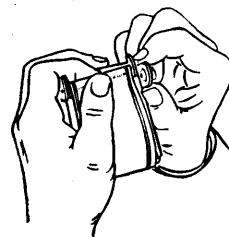


Illustration Six

With winding key pulled out so that it will not interfere, replace cone in camera as in Illustration 7. Note that cup with hole showing slotted end of empty spool is at top on key side of camera. Now replace back, with ruby window at bottom. With the No. 2 Ansco this ruby window or peephole will

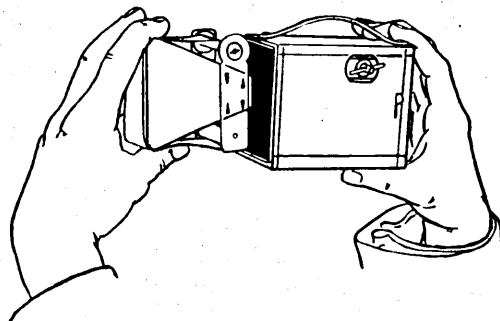


Illustration Seven

HOW TO OPERATE

be in the lower left hand corner and with No. 2A it will be in the lower right hand corner.

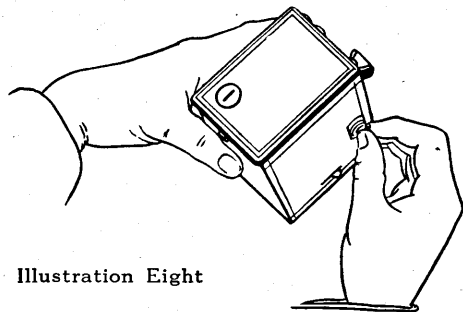


Illustration Eight

With cone inserted and back clasped on, now depress key and turn gently to the right until it slips into slot in end of empty spool, then continue winding until figure 1 appears in ruby window as in Illustration 8. Illustration 8 shows No. 2 Ansco. With No. 2A peephole is at right instead of at left. Key is made so that it will wind to the right only. Camera is now ready for the first exposure. After each exposure wind film until next number appears.

ANSCO BOX CAMERAS

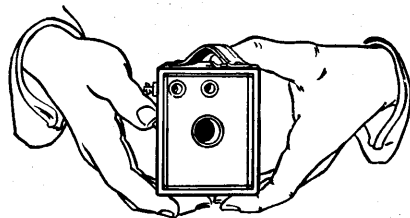


Illustration Nine

Taking Snapshots

HOLDING camera firmly facing subject as in Illustration 9 and locating subject in finder, take snapshots by pushing trigger (shutter release) up or down with right thumb. If trigger is up at start push down for first picture, up for second, etc. Movement of camera during exposure will blur the picture; to avoid this, hold camera close to body and, as you push the trigger, arrest breathing until after shutter clicks. See Illustration 10. For time exposures see page 13.

Removing the Film

WHEN the last or No. 6 section of film has been exposed, complete winding of the film onto the key spool and remove cone as shown in Illustration 2. The exposed roll can now be taken out and end fastened with sticker which you will find in the empty spool chamber. Such a sticker is packed at the end of each roll of film. Before inserting

HOW TO OPERATE

cone and closing camera again, transfer the empty spool to the other side of cone so that latter will be ready for loading a fresh roll, or reload immediately.

Snapshots of Average Subjects

SNAPSHOTS of figures and other near subjects should be made only in good sunlight generally between 9:00 A. M. and 3:30 P. M. in Summer and 10:00 A. M. and 2:00 P. M. in Winter

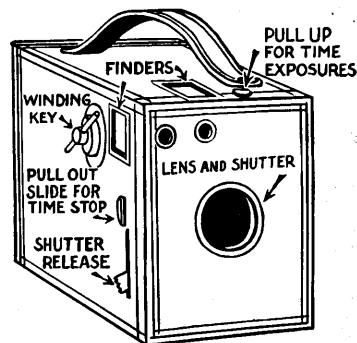


Illustration Ten

Snapshots of Open Views

Landscapes, Open Road Views, Views from Mountains and Tops of Buildings, Beach Scenes, Desert Pictures, etc.

BECAUSE of the open and more intense lighting of such subjects, it is desirable to decrease the size of opening, in order to

ANSCO BOX CAMERAS

hold down the exposure of the film. In the case of distant views, this smaller opening also sharpens up the detail, giving a crispness of definition such as is obtained with expensive lenses on high-grade folding cameras.

To obtain the smaller openings, simply pull out slide in side of camera, just above trigger. See Illustration 10, where this is marked "Pull out slide for time stop." It is called "slide for time stop" because it is principally used in taking time exposures, as explained below, but it is equally useful for the purpose here mentioned. Its action is simply to move the metal piece in front of the lens so as to bring a smaller hole or "stop" into position, thus cutting the exposure and sharpening the focus on distant objects.

Time Exposures

AT TIMES when the light is too dull for a snapshot (see above), or when it is desired to take pictures in the shade or indoors, give a time exposure, proceeding as follows: First, put the camera on a firm support to prevent motion, then pull up metal bar on top of camera (Illustration 10). This bar controls the shutter so that one complete motion of the release, either up or down, opens the shutter, and another in the op-

HOW TO OPERATE

posite direction closes it. Second, pull out the time slide located just above the shutter release (Illustration 10). When this slide is out all the way it brings a smaller stop or opening into position before the lens, which is the rule for time exposures.

For outdoor pictures a time exposure of more than one second, even when taking pictures in the woods, is seldom required—if Ansco Film is used. Indoors expose longer. The subject should of course be still throughout exposure. Do not hesitate to give time exposures, as they make beautiful negatives when light conditions are too poor for snapshots. Excellent interiors of your home can be made with the camera in this way.

Other Ansco Cameras

ANSCO makes a full line of box and folding roll-film cameras in all the six standard picture sizes, and as the oldest manufacturer in the photographic industry has had long experience in designing cameras precisely fitted to every type of picture-taker.

The Ansco Ready-sets give box-camera simplicity with folding-camera convenience. Many thousands have been sold to people who had previously stuck to box cameras through a desire to avoid complications in

ANSCO BOX CAMERAS

focusing and shutter adjustments. The Ready-sets have no such complications. Anyone who can use a box camera successfully—and that really means everyone—can be equally successful with a Ready-set from the very start. The Ready-sets are obtainable in the three most popular sizes at very attractive prices—\$7.50 for the Vest Pocket, \$10.50 for the No. 1 (same size pictures as made with the No. 2 Ansco), and \$13.50 for the No. 1A (same size as the No. 2A Ansco).

For those who have progressed beyond this stage there is a remarkable range of choice in the Ansco line,—beautiful cameras with the finest lenses and shutters and every practical refinement which could be desired, including three models with automatic film-winding. When you or any of your friends contemplate the purchase of another camera, good judgment will suggest obtaining an Ansco catalog for complete information on this interesting subject.

Ansco Cameras and Ansco Speedex Film assure the finest negatives it is possible to obtain. If these negatives—or any negatives—are also printed on Cyko or Noko, the quality finishing papers made by Ansco, their excellence can be brought out to best advantage.